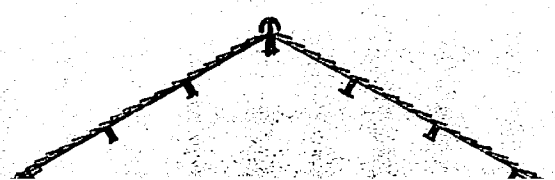
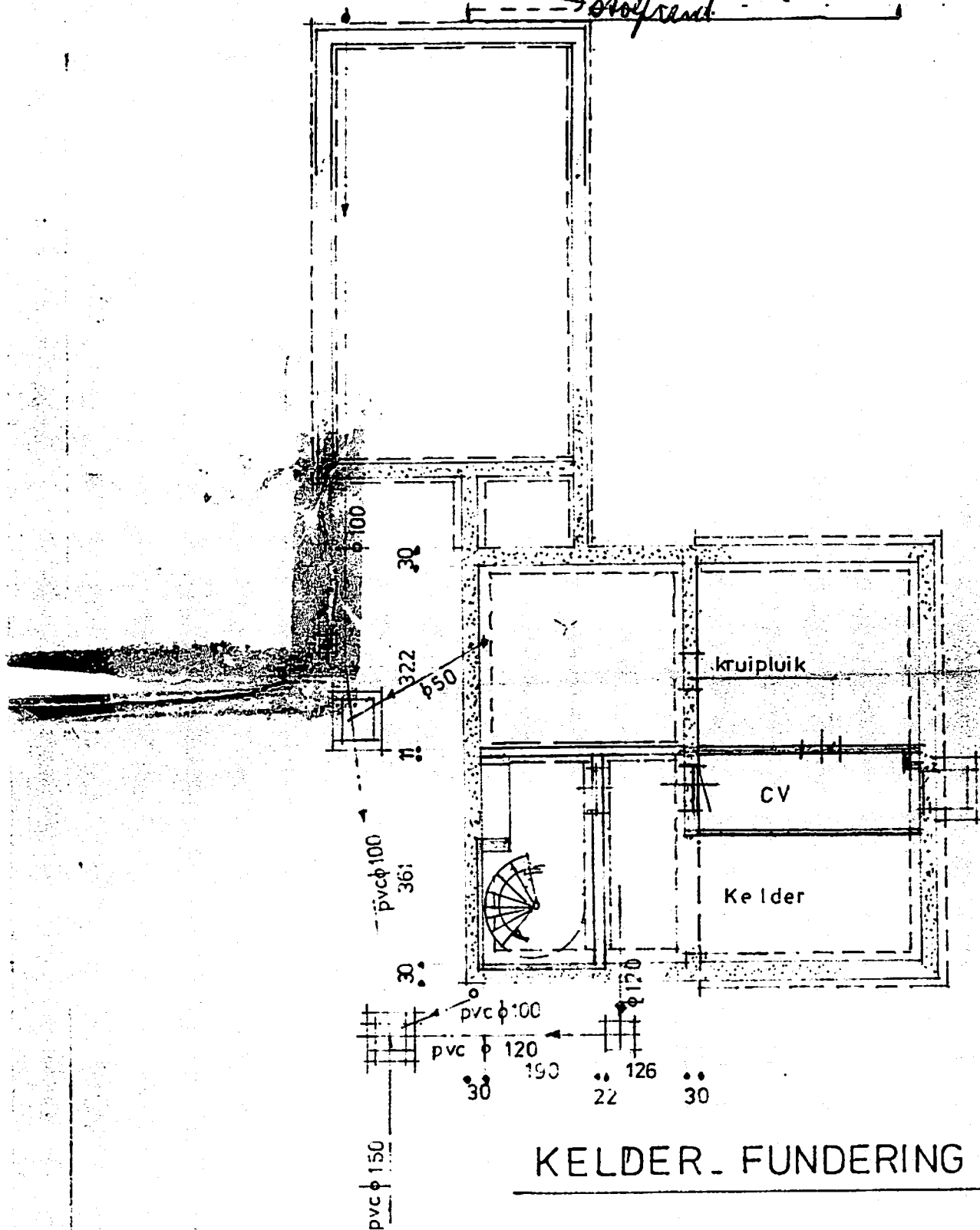


Afm. roolering

- 1<sup>e</sup>
- 2<sup>e</sup>
- 3<sup>e</sup>

# VOORGEVEL

115 mm gewicht  $\downarrow$  115 langs gewel links  
250 mm plat gestapeld  
250 langs gewel links  
140 mm rechter gewel  
2 mm in stoproot hoofd roolering  
stoproot



persen-  
benjing.

bijpenken

garage

kenken

vloerkamur

overlapping.

23  
" 210 27

530

289

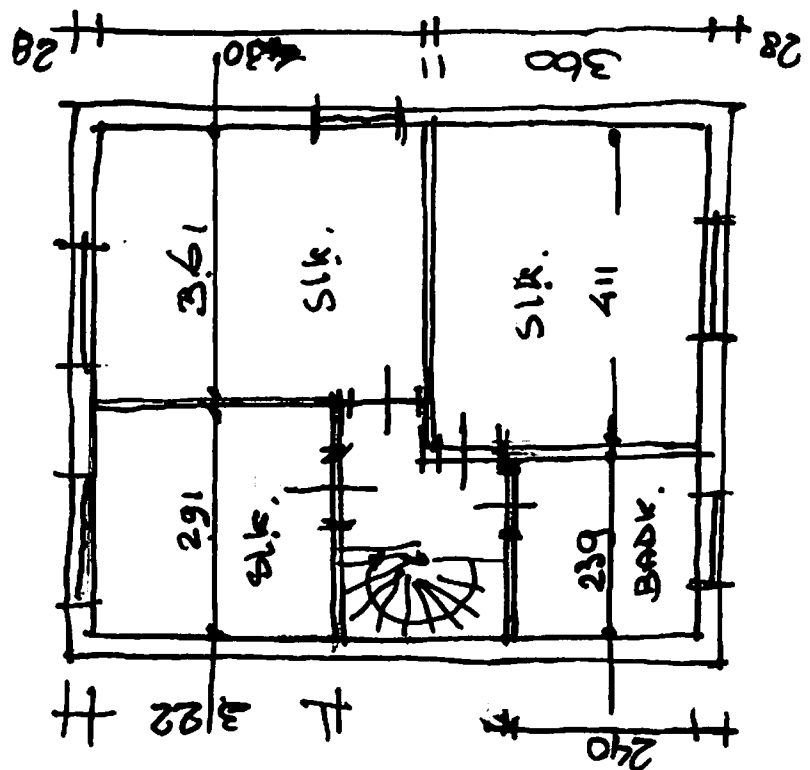
23

24  
24

722

29

BEGANEVOLAND



Verdieping 2

23  
" 210 27

530

289

23

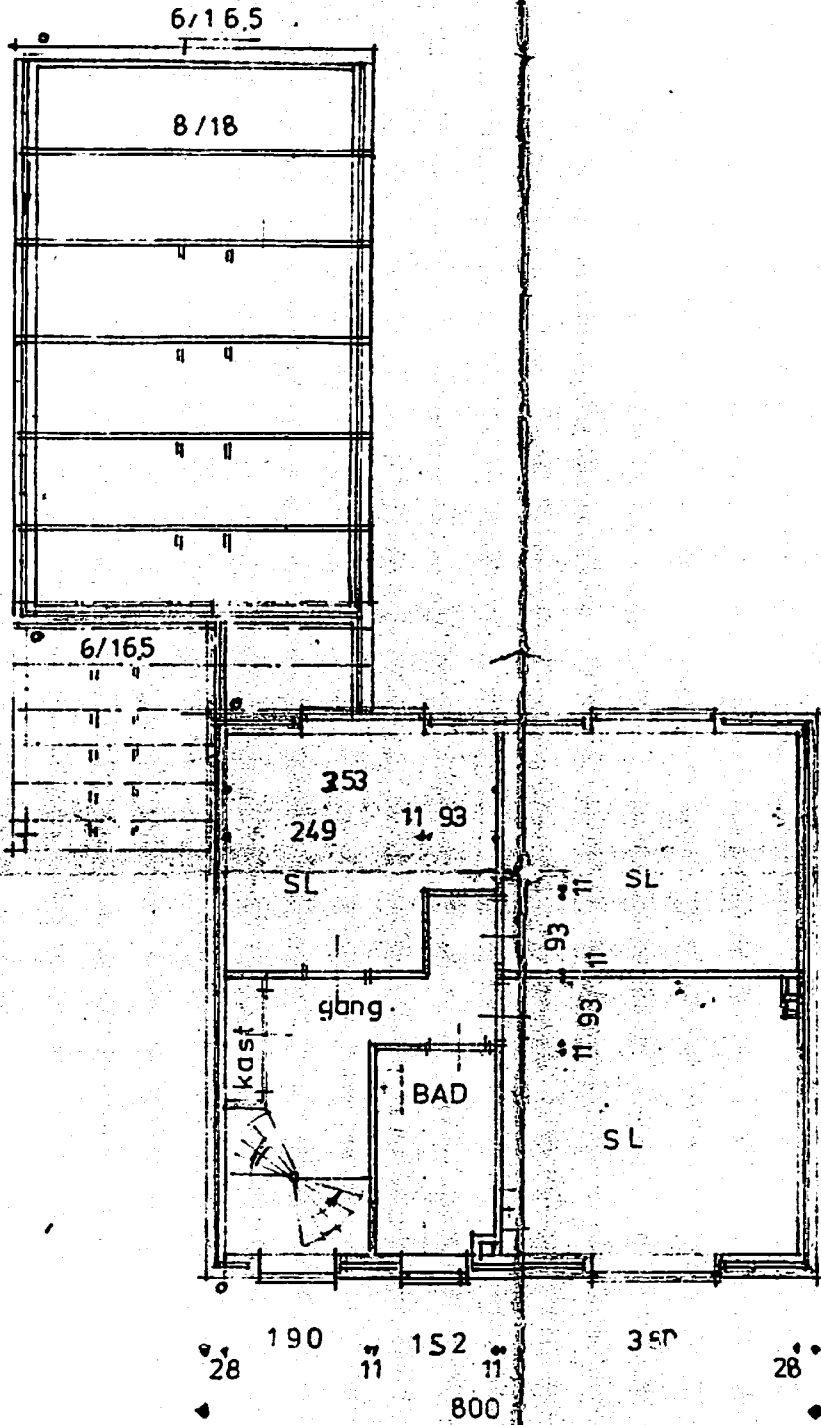
24  
24

722

29

BEGANEVOLAND

# ACHTER GEVEL



VERDIEPING

PI

spaanplaatiepl. dik 2.8 cm

60+

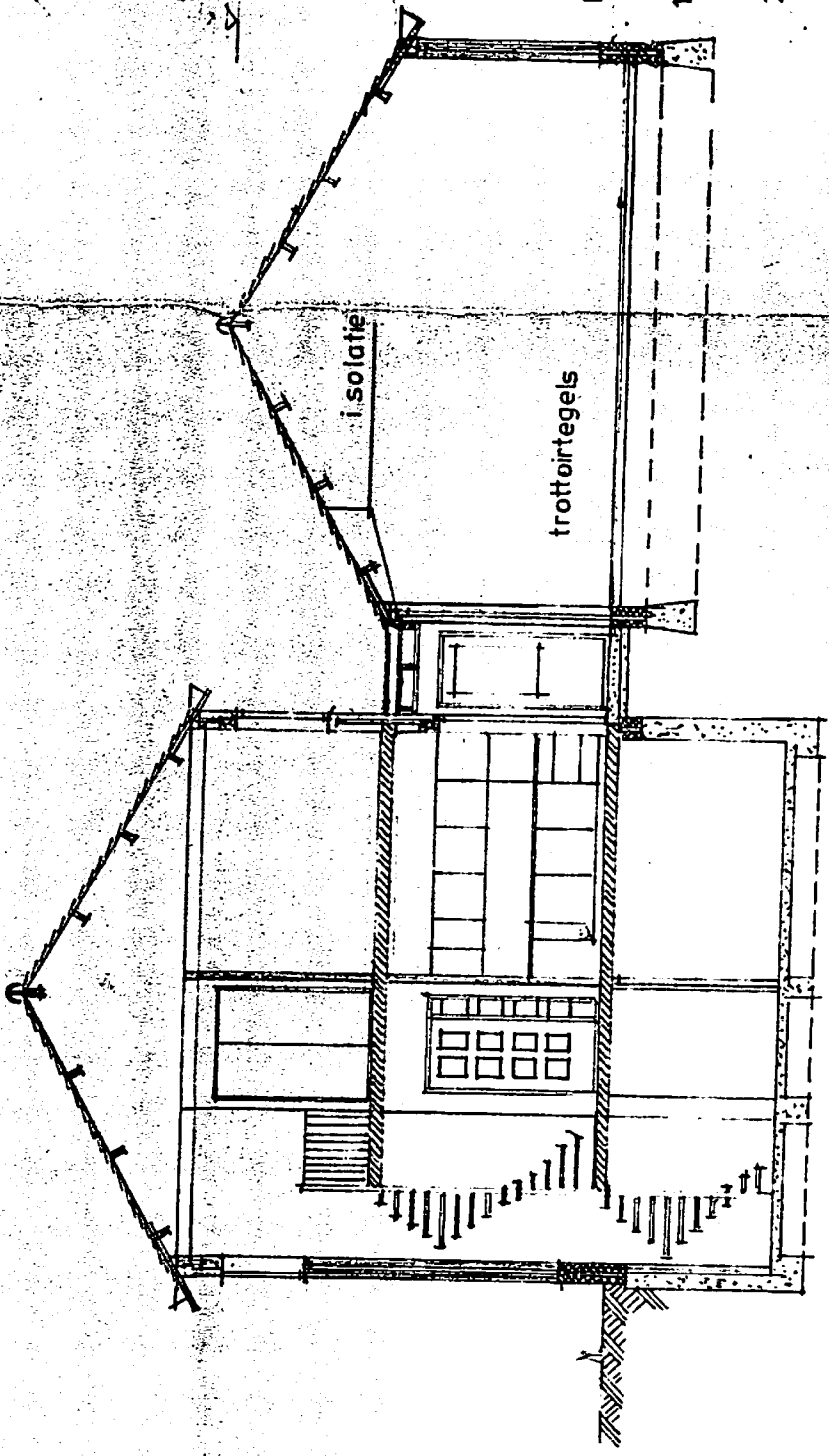
54.0+  
516.

275+

Peil

120-

220 -



DOORSNEDE. A.-A.